



Informations

Event Office

Address: Rua Tenente Carrion, 7 - Vila Oliveira - Santa Maria (RS)
CEP: 97020-690 - Brazil
Phone Nr: (+5555) 3212-3348
Homepages: www.wmoc2014.org.br
E-mail: cbo_bra@uol.com.br

Venue, approach

Event Centre is Hotel Pampas da Serra - Av. Dom Luiz Guanella, 1561 (Rod. RS-235) - São José - 95680-000 - **Canela/RS** - Brazil - between towns of Gramado and Canela, State of Rio Grande do Sul, south of Brazil.

Competitions in the region of Canela and S. Francisco de Paula, maximum 41 km from Event Centre. Sprint Qualification will take place in P. Alegre.

By plane: nearest airport is Salgado Filho International Airport at 1h45min by car to Event Centre in Canela. International flights normally enter Brazil through São Paulo or Rio de Janeiro.

By bus: take bus of Citral Co. at each 2 hours from P. Alegre central bus station (which stops at Airport) (1h45min). It costs R\$ 23,00.

Competitions

Sprint: competitions with a qualification and a final race. The first 80 competitors of each class will qualify for A-final, the following 80 for B-final, and so on.

Long Distance: competition with two qualification races and a final one. Based on the overall results (qualifying races), the first 80 competitors of each class will qualify for A-final, next 80 for B-final, etc.

Classes

World Masters categories for all runners born in 1979 or earlier: W/M 35-, 40-, 45-, 50-, 55-, 60-, 65-, 70-, 75-, 80-, 85-, 90-.

Punching System

SPORTIdent punch system with SI-Card will be used, that can be hired by entry form, for a fee of 8 Eur.

Open participation

Alongside WMOC'14 an open event (public races) will be offered in the same terrain to younger classes, but without prize giving: W/M 10-12 L/S, 14-16, 18-20 and 21 years old (L=long course, S=short course).

Embargoed areas

The embargoed areas are shown on the map. It is permitted to travel along public roads or stay in hotels located inside the embargoed area, but any attempt to survey or train in the indicated areas is forbidden.



Bulletin 1

*On behalf of Brazilian
Orienteering Confederation
(CBO) the WMOC 2014
Organizing Committee*

Event Director: Paulo Calisto Becker

IOF SEA: Øivind Holt (NOR)

National Controller: J.A. Freitas Gomes



Programme

Thursday, 30 Oct: Arrival. Training. Event Centre opens. (Porto Alegre/RS)

Saturday, 01 Nov: Opening Ceremony. Sprint Model Event. Cultural program. (Porto Alegre)

Sunday, 02 Nov: Sprint Qualification, (Porto Alegre). Moving to Canela.

Monday, 03 Nov: Sprint Final and Prize-giving Ceremony. (Canela)

Tuesday, 04 Nov: Rest day, Long Distance Model Event. (Canela)

Wednesday, 05 Nov: 1st Long Distance Qualification.

Thursday, 06 Nov: 2nd L. D. Qualification

Friday, 07 Nov: Rest day.

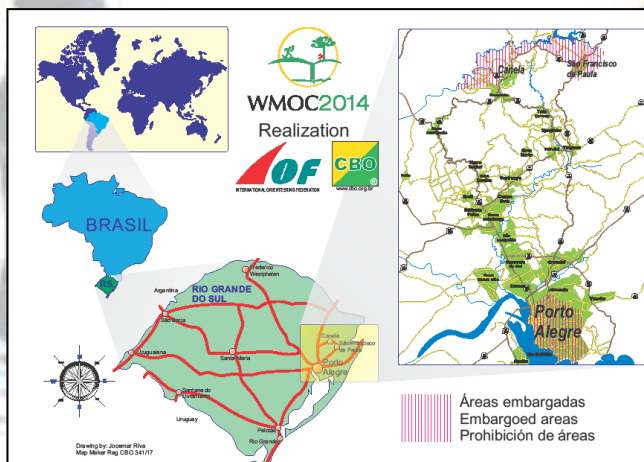
Saturday, 08 Nov: L. D. Final Race, Closing/Prize-giving Ceremony.

Monday, 09 Nov: Departure.



World Masters Orienteering Championships

Porto Alegre/Canela - RS - BRAZIL - 01st to 09th November, 2014



Event Centre in P. Alegre is Auditório Araújo Vianna - Av. Oswaldo Aranha, 685-Parque Farroupilha-Porto Alegre/RS - Brazil.
Phone: (+5551) 3311-5156
recepcao@oiapresentaarauiovianna.com.br



Entries

1) Registration will be possible from 01 Sep, 2013 on www.wmoc2014.org.br.

2) It is possible to enter only one competition (Sprint or Long Distance).

3) Entries become valid only by payment of entry fee.

WMOC 2014 – Entry fees (EUR)				
Deadline	Regist.	Sprint	L. Dist.	Total
05 Feb 14	75	30	45	150
05 Jun 14	95	40	55	190
20 Sep 14	115	45	70	230

Open Event – Entry fees (EUR)		
Deadline	1 day	4 days
05 Feb 14	10 Eur	30 Eur
05 Jun 14	12 Eur	36 Eur
20 Sep 14	15 Eur	45 Eur

Cancellation	
Deadline	Refund
20 th Sept 2014	70%
12 th Oct 2014	50%
From 13 th Oct 2014	0%

Late entries	
From 21 st Sep, 2014 – surcharge of 30 Eur, only for vacant places.	

Changes	
Until 20 th Sept, 2014	Free
From 21 Sept to 13 Oct, 2014	10 Eur

Payment

- By debit or credit card in the on line registration system at:

www.wmoc2014.org.br.

- Via bank transfer:

a) Remit payment order in favour to: Confederacao Brasileira de Orientacao.

b) Address: R. Tenente Carrion, 7 – Vila Oliveira – Santa Maria (RS) – Brazil – CEP 97020-690.

c) Account number (IBAN):
BR001012600000095591

d) Bank name and address:
Banco do Brasil – Rua Marques do Herval, 1354 – Centro – Caxias do Sul/RS - Brazil.

e) Local office: Caxias do Sul Branch

f) Bank identification: SWIFT (BIC) code → BRASBRJCSL with cover through Banco do Brasil Frankfurt Branch (SWIFT BRASDEFF, CHIPS // CH008591).

Accommodation

A wide range of accommodation is offered near Event Centre, since Canela is a tourism pearl town engraved on mountains: international hotels, apartment hotels, guest-houses, cottages, etc.

- On-line booking will be available from 1st of September, 2013.



WMOC2014

- Conditions of payment, change and cancellations for each type of accommodation will be listed on the following homepage:

www.wmoc2014.org.br

After 1st of September, 2013, information and assistance concerning accommodation can be obtained through website:

www.felliniturismo.com.br, or email to:

eventos@felliniturismo.com.br, or tel. number: (+5551) 3216-6300.

Parking

There will be parking areas for private cars, vans and buses within walking distance from the assembly area. A parking fee may be charged.

Transport

The organiser will provide bus transport from the Event Centre to the different assembly areas. Booking through the homepage.

Terrain

The Sprint qualification will take place in Porto Alegre in an urban park situated at sea level. All the other terrains are situated at an altitude of 800-900 m. The forests consist mainly of planted pinus, some eucalyptus mixed with native wood, open grazing land, smaller rocky areas with cliffs and boulders and passable watercourses.

Climate

Weather in November is typically warm and pleasant there, with temperatures between 14° C and 24° C.

Rainfall average in Nov is 128mm (10 to 14 days a month).

Maps

Sprint: ISSOM standard, scale 1:5000, contour interval 2,5m, maps made in 2012, surveyed in 2013 and 2014.

Long Distance: ISOM standard, scale 1:10.000, contour interval 5m, new maps made in 2013, surveyed in 2013 and 2014.

Clothing

Full body coverage is mandatory at Long Distance competition and Final Sprint Course. Studded shoes are not allowed. Dobb spikes are permitted.

Ceremonies, culture

Open ceremony: on Sat (01 Nov) after Sprint Model Event.

Closing ceremony: on Sat (08 Nov) after L. Distance Final.

Official banquet: on Thu (06 Nov) after 2nd L. Distance Qualification, at 8 PM, it has been booked beforehand by the cost of 40 Eur.

More information of cultural events is shown on www.wmoc2014.org.br (some of them must be bookable).

Visa, insurance

- Competitors coming from certain countries need a visa to visit Brazil. On-line form to submit visas to visit Brazil on: <https://scedv.serpro.gov.br>.

- Each competitor participates in the event at his/her own risk. Nevertheless, there will be a whole event insurance policy (life and accident) covering all participants.

Training

Training opportunities will be available from Thursday (30th, October) or earlier, on request.

We are very proud to host veteran Orienteers from all around the globe in PORTO ALEGRE and CANELA!

Welcome to Brazil !

WMOC 2014 Organising Committee

See also:

<http://www.youtube.com/user/wmoc2014>

<https://www.facebook.com/wmoc2014>

